



A

B

C

D

E

F

Spacereservation for the banner

12345678

A

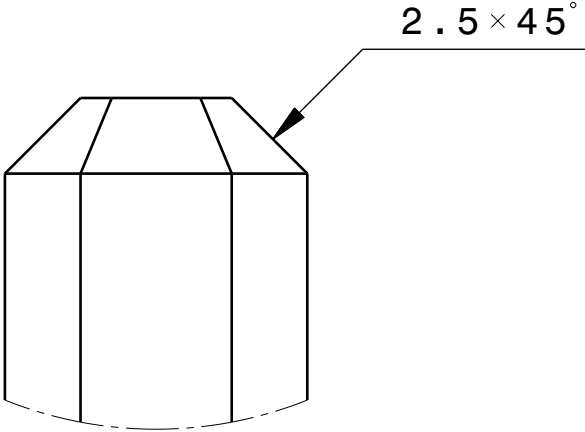
B

C

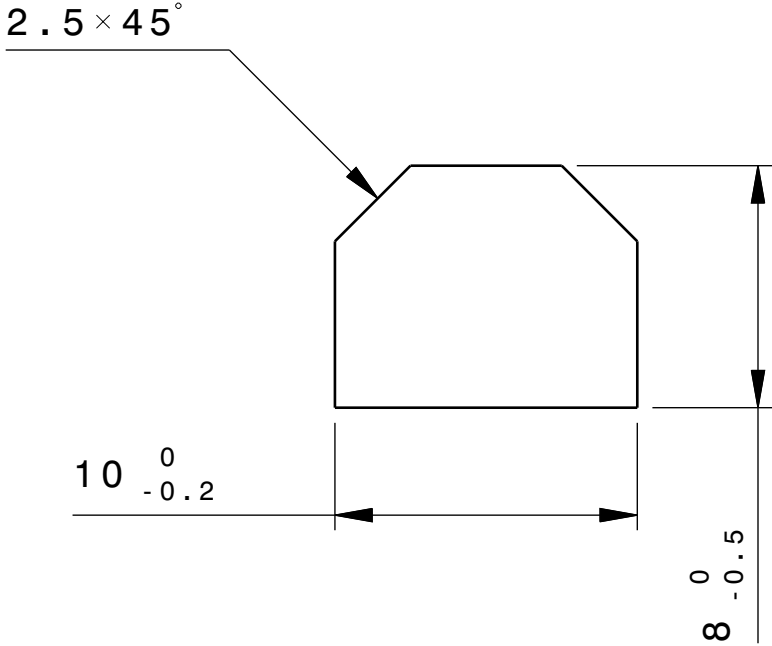
D

E

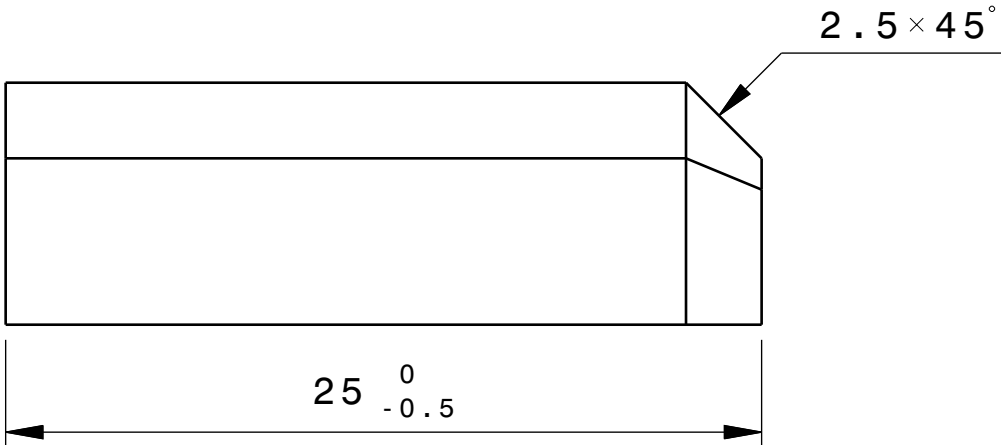
F



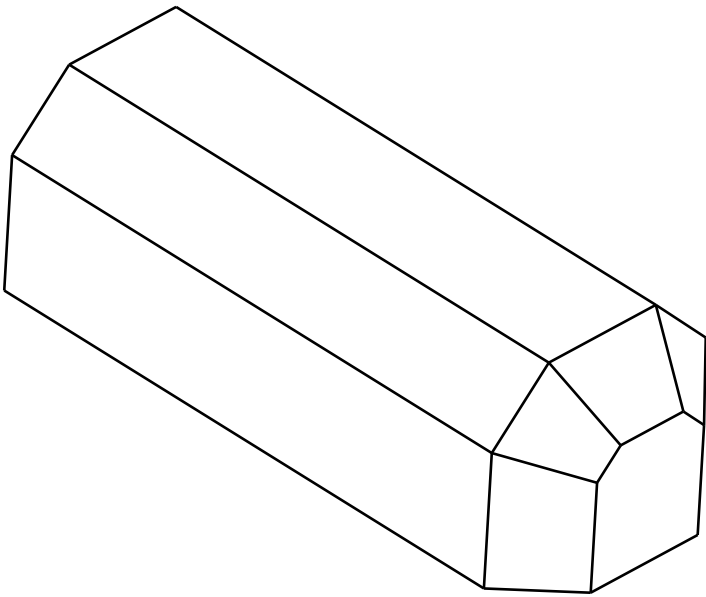
TOP VIEW



FRONT VIEW




RIGHT VIEW



ISOMETRIC VIEW

Note 1: General tolerances according to ISO 2768 cL unless specified.  
Note 2: Material 316L \_ EN1.4404. ITER\_D\_PRYH3C  
Note 3: All dimensions could be found in 3D CAD model as referenced in title block.  
Note 4: Component to be compliant with Annex B requirements, see ITER\_D\_GEA8UD  
Note 5: All external surfaces roughness shall be maximum Ra 6.3 micrometre unless specified.  
Note 6: Break sharp edges.

DRW CAD ID			3RNL8J			APPROVED BY			HUNTR			ITER Organization			LEGAL OWNER				
LINKED EV5 PT ID			SJ522P			TECHNICAL REF			BAOL			INTERNAL USE			<div> china EU india japan korea russia USA</div>				
LINKED 3D ID			SJ5237									When received pursuant to a contract or agreement, the confidentiality clause therein shall be applicable. When received during tender phase treat as confidential.							
PBS TITLE Blanket System First Wall Panels .						DRAWN BY			THIERRB			DRAWING TITLE							
						SAFETY CLASS			NSR			BLKT_FW_BARREL_SHEAR_KEY							
DATE OF ISSUE		PT MATURITY		PT VERSION		QUALITY CLASS			FW CENTRAL BOLT SYSTEM										
30Jan26		FD		- -B		QC-1			DOCUMENT TYPE Part Drawing										
DR STATUS		SCALE		PT STATUS		FORMAT		PBS NUMBER			DRAWING NUMBER			SHEET		N°OF SHEETS		REVISION	
A		4:1		A		A3		16 FW - -			055961			02		02		- - -	
THIRD ANGLE PROJECTION			